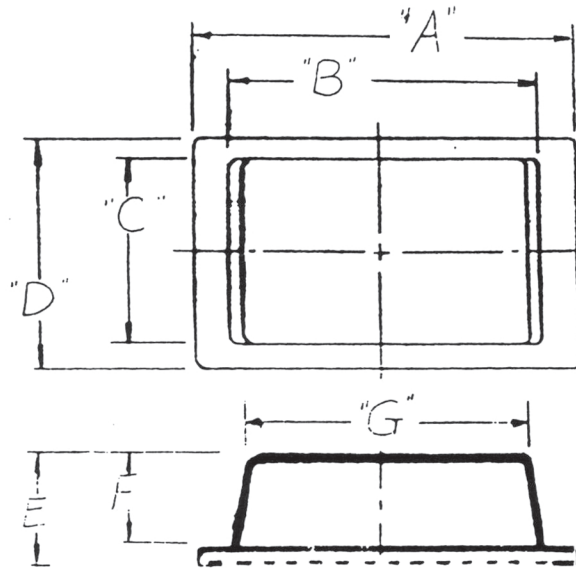
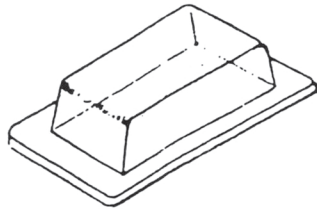


NOTE: ALL DIM'S. ARE OUTSIDE DIMENSIONS,
SEAL SHALL NOT INTERFERE WITH SWITCH
ACTION.



PART NUMBER	A	B	C	D	E	F	G
799A01	1.60	1.30	.69	.90	.400	.350	1.10
886A01	1.71	1.33	.82	.97	.400	.340	1.33
910A01	1.60	1.41	.73	.92	.450	.400	1.25
929A01	2.00	1.62	.84	1.02	.400	.325	1.62
932A01	1.23	.92	.475	.67	.320	.250	.92
970A01	1.27	1.10	.450	.68	.260	.190	1.10
376B01	.75	.45	.37	.75	.31	.24	.45
389B01	.75	.73	.50	.60	.25	.20	.65
949A01	.81	.61	.37	.59	.21	.11	.61
178C01	1.20	.95	.50	.60	.35	.25	.95
988B01	1.65	1.65	1.15	1.15	.55	--	1.65
990B01	1.17	.76	.82	.92	.40	--	.76
943B01	1.66	1.66	1.16	1.16	.64	--	1.66

VIZIFLEX SEALS, INC.
HACKENSACK, N.J.

MAT'L: ULTRAFLEX™
.015 THICKNESS

Rok-R-Seal®

DRAWN BY SS | CHKD BY HG | DATE 4-13-88

TOLERANCES UNLESS SPECIFIED		
DECIMALS	FRACTIONS	ANGLES
.03	1/32	---

SCALE
NONE

MATERIAL:
SEE ABOVE

90 A 1058